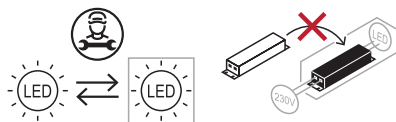


LED LAMP SPECIFICATIONS:

Lumens total flux	2000 lm
Rated Wattage	30W
Rated luminous flux	2000 lm
Nominal life time of the lamp	30,000 hrs
Colour temperature	4200K
Number of switching cycles before premature lamp failure	≥15,000
Warm-up time up to 60 % of the full light output	Instant full light
Dimmable	No
LED array dimensions (W/H)	198 x 167mm
Nominal beam angle	120°
Rated power	30W
Rated lamp lifetime	30,000 hrs
Displacement factor	
Lumen maintenance factor at end of nominal life	≥0.70
Starting time	<0.1s
Colour rendering	≥80
Colour consistency	Within 6 step Macadam ellipse
Rated peak intensity	720cd
Rated beam angle	120°
Voltage	220/240V

This product contains a Light Source of Energy Efficiency Class G
Not suitable for accent lighting



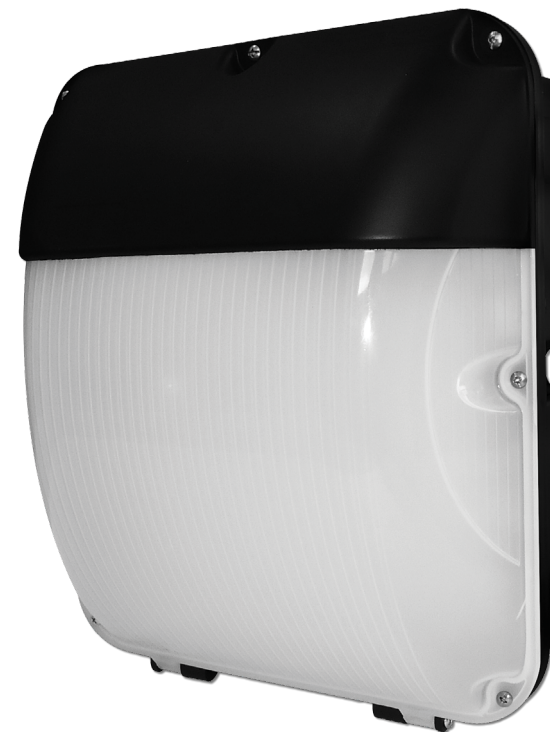
See website for more information on
replacability and recycling



Everyday Lighting For Professionals

INSTALLATION INSTRUCTIONS

A guide for qualified electricians



Pack contents:

1 x 30W LED bulkhead

Model:

WPACKLED / WPACKLEDPC

30W IP65 LED Bulkhead / With Photocell

These instructions are provided as a guideline to assist you.

**PLEASE READ THESE INSTRUCTIONS BEFORE INSTALLATION
AND RETAIN FOR FUTURE REFERENCE**



Email: sales@eterna-lighting.co.uk / technical@eterna-lighting.co.uk

Visit our website: www.eterna-lighting.co.uk

Made in China

Issue 0821

READ THIS FIRST:

Check the pack and make sure you have all of the parts listed on the front of this booklet. If not, contact the outlet where you bought this product.

This light fitting must be installed by a competent person in accordance with the Building and IEE Wiring Regulations.

As the buyer, installer and/or user of this product it is your own responsibility to ensure that this fitting is fit for the purpose for which you have intended it. Eterna Lighting cannot accept any liability for loss, damage or premature failure resulting from inappropriate use.

This product is designed and constructed according to the principles of the appropriate British Standard and is intended for normal domestic service. Use of this fitting in any other environments for example; where prolonged periods of use or higher than normal ambient temperatures, may result in a shortened working life.

Switch off the mains before commencing installation and remove the appropriate circuit fuse or lock off MCB.

This unit is suitable for outdoor use.

PHOTOCELL VERSION:

Do not install under eaves or in a location of frequent shadow that will prevent the light from switching off when required. Do not install near other sources of bright light that will prevent the light from switching on when the ambient light level falls.

Do not install on white or very reflective surfaces as this may cause the photocell to work incorrectly due to light reflecting back into the photocell.

This product is suitable for installation on surfaces with normal flammability e.g. wood, plasterboard, and masonry. It is not suitable for use on highly flammable surfaces.

Before making fixing hole(s), check that there are no obstructions hidden beneath the mounting surface such as pipes or cables.

The chosen location of your new fitting should allow for the product to be securely mounted and safely connected to the mains supply (lighting circuit).

When making connections ensure; that the terminals are tightened securely and that no strands of wire protrude. Check that the terminals are tightened onto the bared conductors and not onto any insulation. Wrap loose terminal blocks well with insulating tape.

IMPORTANT: you are advised at every stage of your installation to double-check any electrical connections you have made. After you have

completed your installation there are electrical tests that should be carried out: these tests are specified in the Wiring Regulations (BS7671) referred to in the Building Regulations.

INSTALLATION:

IMPORTANT: Fitting must be installed vertically with black diffuser housing at top. (See fig.1 opposite).

- 01) Choose the location for your new light fitting giving consideration to the points listed opposite.
- 02) To access the fitting, remove the seven retaining screws and lower the hinged diffuser.
- 03) Drill out four fixing holes in the back of the fitting, according to your chosen fixing method. All four blind holes are pre-cast within the feet bosses. This enables the fitting to be mounted securely to a solid surface.
- 04) Choose the point for cable entry and remove (with care) the corresponding knock-out using a 20mm. hole saw. (See fig.2 opposite). **DO NOT USE A HAMMER.**
- 05) Using the fitting as a template, mark the location of your fixing holes on the mounting surface.
- 06) Secure the fitting into position using suitable screws and washers (fixings not supplied).
- 07) Cover the heads of the screws with silicone sealant (not supplied), to maintain IP rating.
- 08) Insert an IP rated grommet or an IP65 cable gland and lock into position.
- 09) Thread the supply cable into the fitting.
- 10) Make the electrical connections according to the following:

Brown wire to Live terminal L
Green/Yellow wire to Earth terminal
Blue wire to Neutral terminal N

- 11) Replace the terminal block cover.
- 12) Re-affix diffuser and tighten the seven screws taking care not to over tighten, as this may damage the unit.
- 13) Restore power and switch on.

WPACKLED

The fitting should light when switched on.

WPACKLEDPC

The fitting will light when the power has been restored and the ambient light level falls below the preset threshold on the photocell (note this unit is not adjustable).

Fig 1

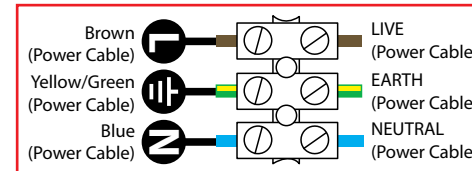
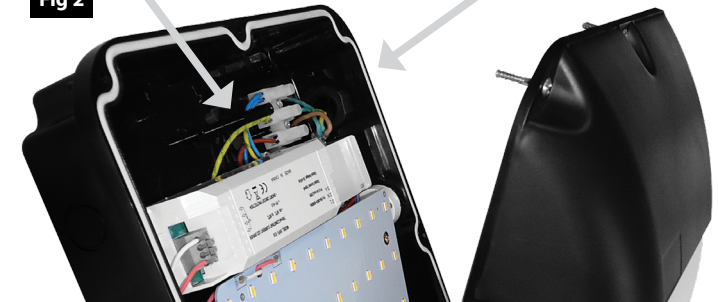


Fig 2



LAMP REPLACEMENT:

The light source is designed to last the lifetime of the luminaire.

The light source contained in this luminaire shall only be replaced by the manufacturer, service agent or a similar qualified person.

CAUTION, RISK OF ELECTRIC SHOCK.



EVENTUALLY, YOU MAY WANT TO REPLACE THIS PRODUCT:

Regulations require the recycling of Waste from Electrical and Electronic Equipment (European "WEEE Directive" effective August 2005—UK WEEE Regulations effective 2nd January 2007). Environment Agency Registered Producer: WEE/GA0248QZ.

WHEN YOUR PRODUCT COMES TO THE END OF ITS LIFE OR YOU CHOOSE TO REPLACE IT, PLEASE RECYCLE IT WHERE FACILITIES EXIST - DO NOT DISPOSE WITH HOUSEHOLD WASTE.

CLEANING:

Clean this light fitting only with a soft dry cloth.

Do not use any chemical or abrasive cleaners.

IF YOU EXPERIENCE PROBLEMS:

If you believe your product is defective, please return it to the place where you bought it. Our Technical Team will gladly advise on any Eterna Lighting product, but may not be able to give specific instructions regarding individual installations.