

## WAGOBOX Light

### Part No. 51257303 (Pack of 10)

A multipurpose electrical junction enclosure that has been designed for use with the 224 Series connectors.

The WAGOBOX Light is easy to use and quick to fit.

#### Fast

- Installing a WAGOBOX Light can take as little as 25% of the time it takes to install a screw terminal style junction box.
- Cables are cut to size and connected outside the WAGOBOX Light.
- No awkward connections in small spaces.

#### Easy to use

- No screws or fiddly clamp bars.
- Cables slot into position and are secured in seconds.
- Uses simple to fit 224 Series lighting connector.

#### Compact

- Dimensions: 39mm x 29mm x 95mm.
- Supports up to 3 cables.
- Fits through a 49mm diameter spotlight hole.

#### Configurable

- The integrated cable clamp can secure flex, 6242Y and 6243Y cables from 0.5 - 2.5mm<sup>2</sup> twin and earth.
- Robust cable grippers that can be configured in seconds to grip cables up to 8mm in diameter.
- Use with 224-101 and 224-112 lighting connectors to suit the job.

#### Professional

- Complies with BS EN 60670-22.
- Meets all the requirements of the 17th Edition of BS 7671.

## WAGO Connectors

### 224 Series Lighting Connectors



224-101 / 2-con  
Installation side:- 1 - 2.5mm<sup>2</sup> "s"  
Lighting side:- 0.5 - 2.5mm<sup>2</sup> "s" / "f-st"  
400V/4kV/2' - 24A



224-112 / 3-con  
Installation side:- 1 - 2.5mm<sup>2</sup> "s"  
Lighting side:- 0.5 - 2.5mm<sup>2</sup> "s" / "f-st"  
400V/4kV/2' - 24A



224-201 / 2-con  
0.5 - 2.5mm<sup>2</sup> "s" / "f-st"  
400V/4kV/2' - 24A

"s" solid "f-st" fine stranded  
1 In grounded (earthed) supply systems

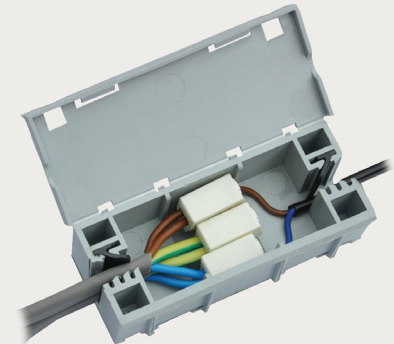
#### WAGO Limited

Triton Park, Swift Valley Industrial Estate  
Rugby, Warwickshire, CV21 1SG  
Tel: 01788 568 008 Fax: 01788 568 050  
uksales@wago.com www.wago.com/gb

WAGO is a registered trademark of WAGO  
Verwaltungsgesellschaft mbH.

## WAGOBOX Light

### A Junction Box Innovation



# Installation Instructions

## For BS EN 60670-22 Accessory

The WAGOBX Light enclosure is designed for use with the 224 Series connectors. The WAGOBX Light is rated up to 400V and can support conductor sizes from 0.5 - 2.5mm<sup>2</sup>. The maximum number of supported individual conductor connections is twelve when using the 224-112 connectors.

If you are in any way unsure about any of the following steps or how to connect the circuit, then consult a qualified electrician.

### Incredibly Simple...

The WAGOBX is easy to use and fast to fit, just follow the steps below and see how the WAGOBX Light will revolutionise the way you work.

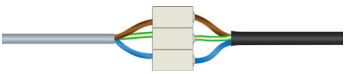
- Strip back the outer protective sheath of the cable 35mm.



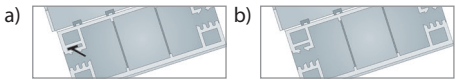
- Select the appropriate 224 Series connector for the circuit to be connected. Strip insulation to recommended length.

Installation side	Lighting side
1 - 2.5mm <sup>2</sup> solid	0.5 - 2.5mm <sup>2</sup> solid
9 - 11mm strip length	0.5 - 2.5mm <sup>2</sup> fine-stranded 9 - 11mm strip length

- Connect the cables together to make the circuit.



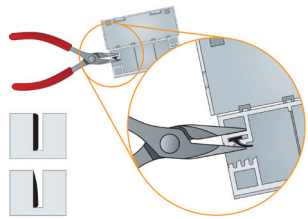
- Configure the cable clamp with the black plastic cable gripper.



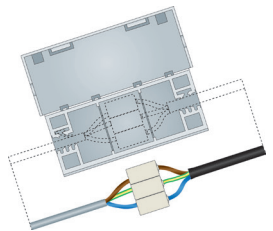
a) The black plastic gripper should be left in place for cables with an overall diameter less than 6mm. Typically this will be 1mm<sup>2</sup>, 1.5mm<sup>2</sup> and 2.5mm<sup>2</sup> (6242Y) twin and earth and small flex.

b) For larger cables with an overall diameter of approximately 7 - 8mm the black plastic gripper can be removed as the cables will be gripped by the housing.

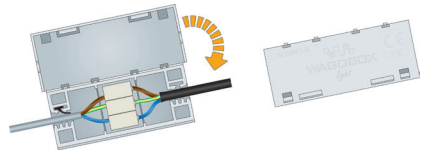
- Adjust the gripper to make inserting cables easier. If the diameter of the cable is approximately 5mm the gripper can be adjusted to make inserting the cable easier. Use a pair of narrow nosed pliers to squeeze the top of the gripper increasing the gap between the top edge of the gripper and the teeth of the cable clamp.



- Arrange the cables and connectors over the WAGOBX Light ensuring the outer sheath of the cables protrudes past the grippers into the inside of the WAGOBX Light.



- Push the cables down into the clamps as far as they will go. Close the lid and snap shut.



- If required the WAGOBX Light can be fitted to a surface using the WAGOBX mounting button feature. The base of the WAGOBX Light has two sliding slots, either one or both can be used. Simply fix the mounting button to the required position and slide the WAGOBX Light into place. The lid of the WAGOBX Light can be secured with a tie wrap if necessary.

