

Ingress Protection Ratings Guide

IP

Solids

Protection against

Liquids



Protected against a solid object greater than 50mm, such as a hand.



Protected against dust and contact. Limited ingress of dust permitted.



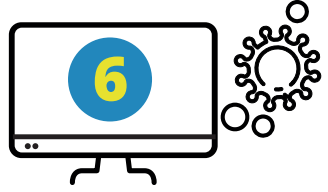
Protected against vertically falling drops of water. Limited Ingress permitted.



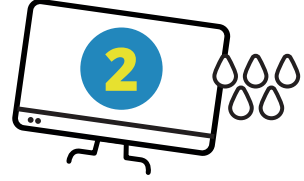
Protected against high pressure jet spray from all directions and temporary flooding.



Protected against a solid object greater than 12.5mm, such as a finger.



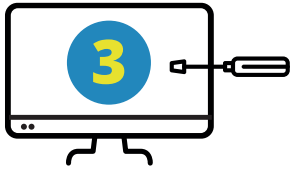
Protected against dust and contact with zero ingress permitted.



Protected against vertically falling drops of water with enclosure tilted vertically up to 15°. Limited ingress permitted.



Protected against immersion in up to 1mtr of liquid



Protected against a solid object greater than 2.5mm, such as a screwdriver.



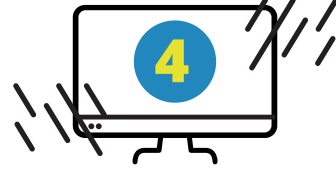
Protected against sprays of water tilted vertically up to 60°. Limited ingress permitted.



Protected against long periods of immersion under pressure.



Protected against a solid object greater than 1mm, such as small wires or screws.



Protected against sprays of water from all directions. Limited ingress permitted.



Protected against close range, high pressure jet spray.



Protected against low pressure jet spray from all directions.