

**GENERAL**

This alarm is a Photoelectric type Smoke alarm. This means that the alarm detects smoke in the air, caused by a fire. It does not detect the fire itself, or heat, or gas. If the alarm is correctly mounted and maintained it will sound an alarm at an early stage, giving you vital extra time to evacuate your home and call the emergency services. It cannot prevent a fire. Please read the instructions fully and carefully before use of the smoke detector.

**ALARM**

**BATTERY /REPLACEMENT**

The smoke detector works on one 9V DC battery. Normally the battery will last for at least one year under normal conditions of use. If the battery is empty or almost empty the smoke detector will indicate this with an audible "beep". This indicator sounds continually with intervals of 30-40 seconds for at least 30 days. Replace the battery when this indicator is given. Please use 9V Alkaline DC battery (type:PP3) with high quality (available from most department stores, DIY shops, electronic supply shops) .Replace the battery by turning the smoke alarm anti-clockwise to remove it from the base plate. The 9V battery can then be accessed at the rear of the smoke alarm.

**MOUNTING**

**Where is the best place to place the smoke detectors?**

- At least one in each room on the ceiling
- one on each floor
- at least 30cm from objects e.g. lights and walls.
- in the hallway and main landings (not above stairs)
- in front of each bedroom door
- in each bedroom (if you sleep with the door shut)
- in the living room
- in the storage room or spaces with electric equipment

**The alarm may not be mounted in:**

- a room in which the temperature can reach below 4 and above 40°C
- bathrooms
- kitchens or other cooking areas
- in damp spaces
- just in front of doors or windows and not near a ventilator fan or radiator.

Do not mount the alarm in a place which is difficult to reach because of the test button, replaceable battery and maintenance. To mount the alarm fix the base plate using the screws supplied onto the area you have chosen. Pay attention to the following instructions and drawings. Gently tighten the alarm onto the base plate. Mount the alarm in the centre of the ceiling of the room.

**USE**

The alarm is provided with a test button. Press this until the alarm signal sounds. The signal stops once the button is released. Test the alarm at least once per week, and certainly after replacing the battery or after cleaning, with a vacuum cleaner for example. The alarm must be vacuumed regularly to remove dust particles and to protect it as well as possible. The casing may not be opened during cleaning. If the alarm fails to operate correctly, please contact with dealer or manufacturer.

**IMPORTANT**

Installing a smoke alarm is a part of your fire protection, just as fire extinguishers, emergency ladders, ropes, but also your choice in the use of building materials for renovation. Always ensure that there is an evacuation plan, discuss this with your children. Ensure that each room can be left without opening the door, e.g. by the window. If there is any question as to the cause of an alarm, it should be assumed that the alarm is due to an actual fire and the dwelling evacuated immediately.

**NOTE**

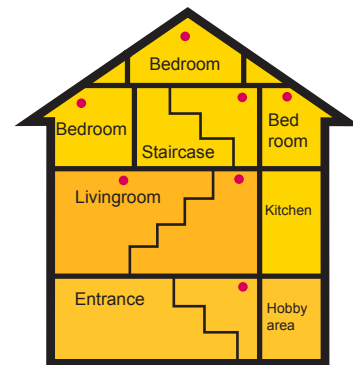
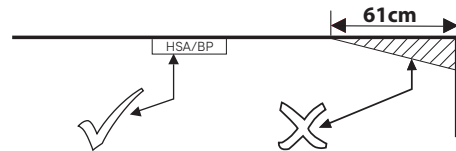
**Do not paint or otherwise cover the smoke detector.**

We can never be made liable for loss and / or damage of whatever nature, including incidental and / or didn't use it according to the instruction and / or consequential loss, arising from the fact that the signal from the smoke alarm did not sound during smoke or fire.

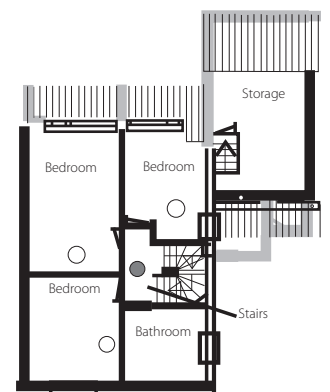
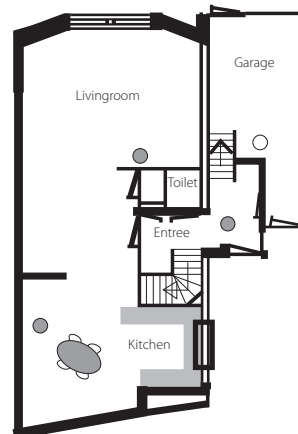


LIGHTING • FIRE & CO DETECTION

HSA/BP Smoke



Recommended placing for the Smoke Alarm: minimum of 1 smoke detector on each floor



● Smoke Alarm for minimal protection

○ Smoke Alarm for extra protection

Hispec Electrical Products Ltd  
 Unit 21 Chorley North Business Park  
 Chorley  
 Lancashire  
 PR6 7BX  
 T: 01257 262197  
 www.hispec.co.uk

