

PRODUCT CODE: CL20FC
CONLOK® MALLEABLE CONDUIT BOX



DESCRIPTION

20mm Conlok® Flanged Coupler

FINISH

Hot Dipped Galvanised

MATERIAL

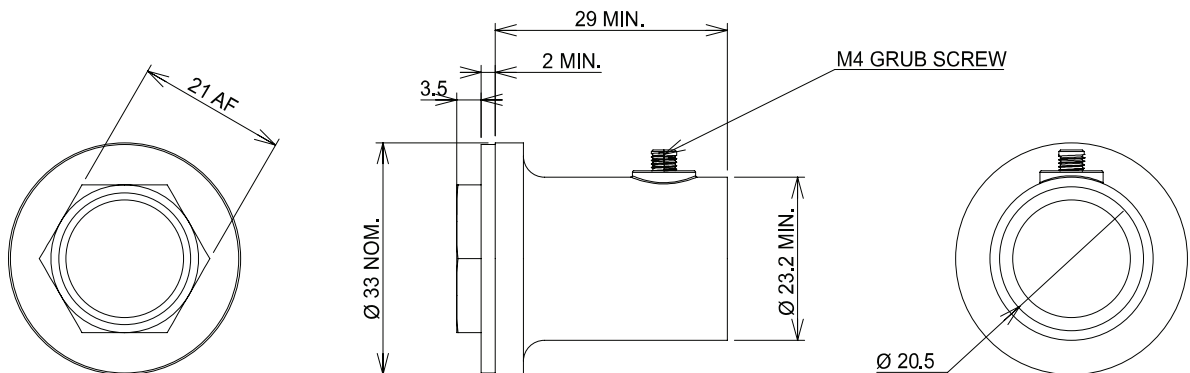
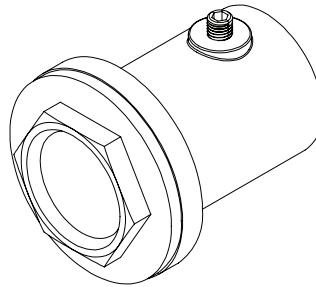
Malleable Iron

PACKAGING

Packed in qty 25

ADDITIONAL NOTES

Conforms to BS EN61386-21:2004
Supplied with 12.9 Grade Grub Screw
1 x Allen key is supplied in each inner box



⊕ Values are nominal and with a general tolerance ±5% unless otherwise specified